

2019 REVIEW



Samuel
Lawrence
Foundation

"The Samuel Lawrence Foundation (SLF) strives to promote human interaction and encourage broader community access to science, education, and the arts."

LETTER FROM THE PRESIDENT OF THE BOARD

Dear Friends,

Samuel Lawrence Foundation had an incredible 2019, full of growth. This year we further developed our community by hosting events, engaging students in our local high schools, and expanding outreach to new audiences. We even grew our board to represent more areas of expertise. The word that best describes our 2019 would be expansion.

SLF expanded our reach to better serve the public as a source of information through our monthly newsletters to over 6,000 people, and we tripled our social media following on all platforms. You may have recognized that we refreshed our website to be more engaging and informative. We were pleased to see our programs frequently in the press, as our collaborations among partners and advocates grew, both in quality and geographic regions.

Our programs are thrived thanks to the generous assistance of volunteer advisors. In 2019 we increased our volunteer team and saved more than \$32,908 through the assistance of skills-based volunteers. SLF hosted more than two dozen lunch-and-learns where experts and residents joined to discuss pressing developments in science, education, and the arts. At the office farm we hatched seven free-range chickens, who entertained guests during these lunch discussions.

We achieved these 2019 accomplishments together, with our community and network of volunteers and partners. We celebrate these wins with you.

Overall we recognized a shift in 2019 as SLF emerged into the next phase of our growth. We solidified a strong organizational structure that will support the organization for decades to come. As we move beyond the early growing pains of a young nonprofit, and emerge into our 10th year of service, we are ready to take on new generational challenges facing the world. Our core value of collaboration guides our work and we look forward to continuing to pursue our mission with you into 2020.

In Gratitude,



Bart Ziegler, PhD Community and Environmental Medicine
President, Samuel Lawrence Foundation

SLF BOARD AND STAFF MEMBERS



Bart
Ziegler, PhD



Lindsay
Bazett



Alexis
Dixon



Christopher
Hoover



Cathy
Iwane



Holly
Pickerel



Elliot
Rosenberger



Chuck
Ziegler



Farley
Ziegler



Chelsi
Sparti



Torgen
Johnson



Amanda
Palucki

We'd also like to recognize SLF key consultants who ensure SLF programs have the greatest reach: Liz Shear and David Jewell (Governance and Organizational Development); Adam Kaye (Communications); Nancy Smith (Resource Development); Jacqueline Rossow (Fundraising Counsel); and Lucia Palm (Accounting).

DIRECT PROGRAM ACCOMPLISHMENTS



Samuel Lawrence Foundation believes breakthrough change happens when programs work at the intersection of science, education, and the arts.

Samuel Lawrence Foundation was founded in 2010, and acts as a “community engagement bridge.” We connect local and international groups to move forward with bold vision and actions to address generational issues facing our world.

The SLF core team is small and focused. We achieve our work through collaboration with dozens of skilled volunteers. Each program we support weaves together aspects of rigorous science, engaging education, and inspiring art, because we need all three aspects to advance learning and make better decisions.

We believe that improved solutions require new voices and novel ways of partnering across sectors. SLF's creativity, risk-taking, and can-do spirit are what fuel the work, and we hope you'll join us in 2020 to build more momentum.

San Onofre and Beyond

San Onofre and Beyond supports multi-faceted collaborations to advance the best available radioactive waste storage, across the nation. Our aim is to ensure safety at San Onofre and all nuclear power plants, today and for future generations.

“SLF has been a reliable and dynamic partner with us at Strategic Energy Innovations (SEI). We are thrilled to work with SLF and look forward to increasing our impact to over 40,000 K-12 students annually with them.”

– Liz Fitzpatrick, Strategic Energy Innovations (SEI)

“SLF staff started as volunteers on Oceanside High School's Environmental Innovation Academy advisory board, and quickly stepped into action. They are creating meaningful opportunities for our students to make connections between industry and environmental causes, participated in professional development for teachers, and organized Songs for S.O.N.G.S. programming at OHS. We expected to receive guidance from SLF as we grew our Academy, but instead have been gifted with so much more.”

–Juan Hernandez,
Oceanside High School



75 EDUCATION SESSIONS

6K NEWSLETTER SUBSCRIBERS

3 CITY RESOLUTIONS PASSED

900 PEOPLE AT PATAGONIA'S SURF ACTIVISM TOUR

2 STAFF ON REP. LEVIN'S TASK FORCE

29 NEWS OUTLETS COVERING SAN ONOFRE

3 SCIENTIFIC PAPERS RELEASED

Head Start Movement

Head Start Movement provides dance movement classes to three and four years olds enrolled in the Head Start Program run by Easter Seals Southern California. We use dance to instill a sense of joy and disciplined practice for students with limited access to the arts.

"The Head Start Movement program offered by SLF inspires young minds and encourages them to seek out the arts. Learning dance and movement helps them to learn about their own body. Having weekly access to professional dancers at a young age makes a positive impact on the students' lives."

-Sara Salazar, Head Start Director Solana Beach

6

DANCE INSTRUCTORS

102

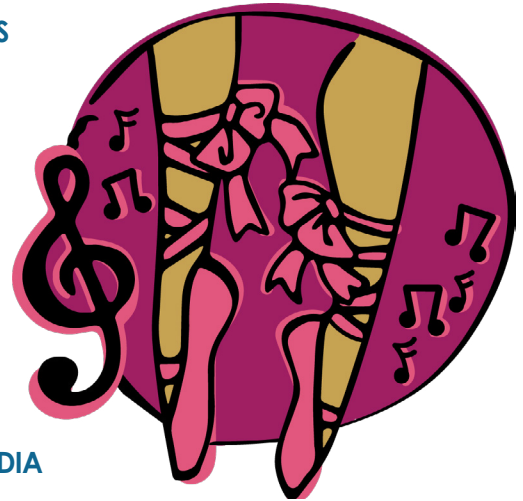
HOURS OF INSTRUCTION

180

STUDENTS SERVED

3

LOCATIONS:
SOLANA BEACH
ENCINITAS, & LEUCADIA



Climate Resilience Initiative

The climate resilience initiative at SLF has focused on California wildfire recovery since 2018. Our efforts included providing technical expertise, assistance in navigating infrastructure improvements, and holding microgrid education sessions with the communities of Malibu and Paradise during recovery after Woolsey and Camp fires.



9

PLANNING
SESSIONS

5

STATE AGENCIES
CONNECTED

10

MONTHS BUILDING
CAPACITY

5

DEDICATED EXPERTS: ENERGY, ARCHITECTURE, BUSINESS, TOXICOLOGY,
& ENVIRONMENTAL JUSTICE

SLF Awards Recognizing Unsung Hero-ines

Several times per year SLF recognizes inspiring individuals and groups that demonstrate leadership and enhance our communities. The Unsung Hero-ines program was launched to encourage bright minds and inspire collaboration.

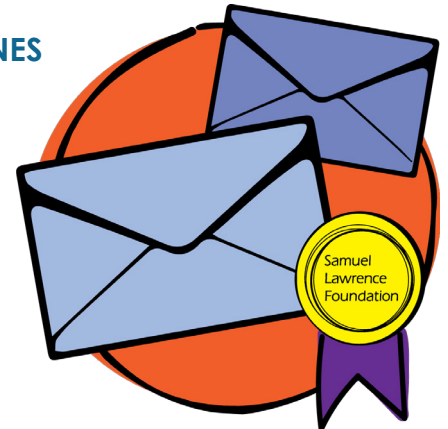
"Samuel Lawrence Foundation recognizes those unsung hero-ines who quietly demonstrate leadership and enhance our communities. Just imagine opening your mail to find a surprise thank you note and a gift for doing 'the right thing'. Sure makes your day!"

-Liz Shear,
Shear Directions

17

SOCIAL JUSTICE HERO-INES

Dr. Kate Spradley
Mr. Jean-Rene Etchegaray
Josh Koskoff
Judge Micaela Alvarez
St. Albans Shirley Football Club
Kath Rogers
Center for Political Beauty
Reverend Gerald Toussaint
Stephanie Hofeller
Jeff Pietrzyk
Brian ALazzawi
Maria Farmer
Dr. Leana Wen
Professor Mark Denheux
Sharon Lerner
Babak Babakinejad
Amanda Phingbodhipakkiya



FISCAL SPONSOREE ACCOMPLISHMENTS

Samuel Lawrence Foundation is proud to offer our no-cost coaching and assistance to help fiscal sponsorees grow to meet community needs.

Samuel Lawrence Foundation provides fiscal sponsorship to a select few organizations who have not yet received their IRS nonprofit status. We support these groups with non-monetary resources including: nonprofit coaching, guidance on grant applications, and assistance making connections. The relationships are long-term and ensure continuity of program impact and professional development of the program directors.

Over the years, SLF's fiscal sponsorship program expanded our ability to meet our mission. The leaders of these groups are members of the communities they serve, making them the best suited to deliver services. Their community relationships and cultural understanding place these organizations on a path to success.

Barrio Botany



Barrio Botany provides school garden experiential learning opportunities in San Diego urban communities. Our vision is of a community transformed from a highly-polluted, economically depressed neighborhood into a vibrant area with healthy and capable students, a cleaner environment, and a strong future.

123

HORTI-
CULTURE
CLASSES

148

PLANTS
DISTRIBUTED

500

PEOPLE AT
GARDEN
FESTIVAL

10

TEACHERS
TRAINED

Dually Noted

"The Samuel Lawrence Foundation provides immeasurable support to budding groups like Dually Noted because they recognize that the arts and sciences work in concert. Without SLF's guidance and expertise, Dually Noted would not be where it is today."

– Rebecca Matayoshi,
Dually Noted



Dually Noted connects people to classical music by sharing a meaningful meal during home concerts. Our aim is to support local chefs and talented musicians, and attract more people to the beauty of classical music.

104

PEOPLE
SERVED

15

MUSICIANS
SHOWCASED

5

HOME
CONCERTS

5

TOP-NOTCH
CHEFS

Floating Schools Of Bangladesh

Shidhulai Swanirvar Sangstha, also known as the Floating Schools of Bangladesh, operates solar-powered school boats which serve as both a school bus and classroom in flood-prone Bangladesh. The program serves students year-round and prevents interruption in education from the monsoon season in the Pabna and Natore district in Bangladesh.

CLICK
to take a
virtual tour of
the floating
playground



180

STUDENTS
EDUCATED

24

ON-BOARD
TRAININGS

18

VILLAGES
SERVED

1

PLAYGROUND
BOAT
CONSTRUCTED

Indian Point Safe Energy Coalition



Indian Point Safe Energy Coalition exists to address the vulnerability of the nuclear reactors at Indian Point, outside of New York City. The coalition is made up of environmental, health, and public policy organizations who aim to plan for safe closure and decommissioning of nuclear power plants.

2

NATIONAL PLANNING
RETIRES

5

PART INVESTIGATIVE
REPORTING SERIES IN
USA TODAY

1

CONGRESSIONAL BRIEFING
Watch

Social Justice in Uniontown, Alabama

"The Samuel Lawrence Foundation has been a critical partner in the struggle for environmental justice in Uniontown, Alabama. SLF understands that our role, as technical assistance providers and allies, is to help community residents achieve their own vision for their future."

-Marianne Engleman,
Yale University, School
of Law

The social justice program in Uniontown, Alabama explores holistic, culturally relevant solutions to environmental problems the community faces. With research and support from air pollution scientists and legal experts, the residents of Uniontown fight for justice and their community vision.



2

UNIVERSITIES
ENGAGED

12

AIR MONITORS
DEPLOYED

22

SCIENCE AND
LAW EXPERTS

5

FIELD WORK
TRIPS

STEAM Leadership Series

STEAM Leadership Series exists to bridge high-tech science and business with the high school system. We empower students to live their dreams and find careers in San Diego and beyond.

5

INNOVATIVE
EVENTS

126

DIVERSE
SPEAKERS

99K

STUDENTS
REACHED

5K

SDUSD STUDENTS
ATTENDED



TOPtoTOP Global Climate Expedition

"A special thanks to Bart Ziegler and team who have worked tirelessly to take care of administration, and bookkeeping while we are on sailing expeditions. Our belief is 'to go together is to go far'. The family members and volunteers have gone far again this year."

– Dario and Sabine Schwörer, TOPtoTOP

TOPtoTOP Global Climate Expedition is the first expedition to traverse the seven seas and reach the highest peaks on each of the seven continents. We inspire youth to save our planet by sharing innovative solutions to protect our planet when we speak with local communities in remote regions.



15K

PEOPLE
ATTENDED

1.9K

NAUTICAL
MILES SAILED

40K

ALTIMETERS
CLIMBED

2K

KG PLASTIC
COLLECTED

THE SLF MODEL

Samuel Lawrence Foundation pursues its mission by providing meaningful access to science, education, and the arts to people from a variety of communities. SLF has grown to be a source of news about San Onofre, a source of inspiration providing dance to Head Start students, and a bridge between academia and implementing good ideas for people and the planet. Our collective impact among direct programs and fiscal sponsorees is a great testament to the power of collaboration and encouragement.

FISCAL OVERVIEW

The SLF board and staff were thrilled to deliver some major financial firsts in 2019. It was the first year we held formal fundraisers and a year-end fundraising campaign. Thank you to everyone who helped us lay the groundwork. Your contributions of time and money allow SLF grow impactful programs.

We received gifts from 149 donors in 2019. That's a 36% donor increase year-over-year from 2018. In our year-end campaign we raised \$125,726.22 from 101 individual donations. An incredible 83% of these gifts were made by donors who are new to Samuel Lawrence Foundation. The message of implementing the safest storage of radioactive waste resonated with our community. Thank you for joining the movement.

Your generosity allowed us to jump into our 2020 San Onofre programming without missing a beat. Thanks to your help, we exceeded our goal to fully fund our risk assessment report. We are using the remaining funds in launching our youth outreach, expanding visual and multimedia materials, and strengthening our grassroots advocacy.

2019 By The Numbers

Beginning Cash Balance	\$ 94,601.05
-------------------------------	---------------------

INCOME

SLF Direct Public Support	\$ 125,548.13
SLF In-Kind Support	\$ 107,096.00
SLF Grants	\$ 83,439.43
Fiscal Sponsoree Grants	\$ 58,263.23
TOTAL INCOME*	\$ 374,346.79

EXPENSES

Salary and Rent (in-kind)	\$ 105,758.81
Administration	\$ 24,491.65
Programs	\$ 211,806.36
TOTAL EXPENSES	\$ 342,056.82

Ending Cash Balance	\$ 20,629.75
----------------------------	---------------------

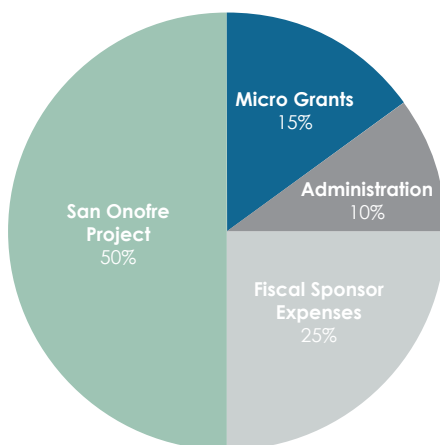
SLF'S Fiscal year is January 1 - December 31

*This table shows the total income results from our year-end fundraising campaign which raised \$125,726.22 from 101 donors, 83% of the donors were new to the organization. Most of these donations were deposited to our account in February 2020 when we received the 2019 check payout by the donation processing company. The donations will be reflected on our 2020 Form 990, and are included here as a 2019 recap.

Detailed financials in an IRS Form 990 will be available on the SLF financial webpage by June 2020.

Expenses By Program

Fiscal Sponsoree Programs



Fiscal Sponsoree Programs are highlighted in a gray box to distinguish them from SLF Direct Programs.

Each Fiscal Sponsoree program director raises funds to operate the program and SLF provides the back-office support and nonprofit coaching to help them succeed.

ENVIRONMENT

Climate Change Resources	\$ 2,392.98
Indian Point Safe Energy Coalition	\$ 9,000.00
San Onofre Project	\$ 116,988.70
Top to Top	\$ 3,000.00
Uniontown	\$ 7,573.90

SCIENCE AND MEDICINE

Research Fellowships	\$ 8,923.70
Science Literacy	\$ 5,908.83

EDUCATION

Floating Schools in Bangladesh	\$ 12,511.00
Sherman Elementary Garden	\$ 5,531.00
STEAM Leadership Series	\$ 20,401.47

ARTS

Dually Noted	\$ 8,100.81
Head Start Movement	\$ 6,160.00
Access to Music	\$ 2,582.00

SLF AWARDS

SLF Awards	\$ 2,731.65
------------	-------------

TOTAL PROGRAM EXPENSES	\$ 211,806.36
-------------------------------	----------------------

DONORS

Thank you, donors. Your contributions of time, money, and ideas inspire our work. With your gift in 2019, you have helped us close our first decade of a with a strong show of support.

ORGANIZATIONS

Autodesk Foundation • Actions@EBMF • The Blynn DA Fund • Coastal Community Foundation • Family Unity Fund • Hotto Charitable Fund • The Hudson School • Jewish Community Foundation • The Keith Campbell Foundation for the Environment • The Linda and Fred Port Family Foundation • Moxie Foundation • Patagonia • Rancho Santa Fe Foundation • Smart & Final Charitable Fund • The San Diego Foundation • Sherry and David Winkler Fund • Szekely Family Foundation • Students Rebuild, a program of the Bezos Family Foundation • The Westreich Foundation

INDIVIDUALS

Adam and Giselle Galper • Adam Schnider • Alexis Dixon • Alice Liu • Alice McNally • Amanda Palucki • Anonymous (24 gifts) • Bart Ziegler • Beatrice Golomb • Cathy Iwane • Chelsi Sparti • Chris Hoover • Christy Hendrickson • Chuck Ziegler • Dave Rice • David and Cindi Clemons • David Bott • David Winkler • Dawn Douglas • Don MacLeod • Donald Mosier • Doug Emery and Molly Eckler • Doug Sheres • Ed Schlegel • Emily Mumper • Erik Phillips • Farley Ziegler • Frederic Wise • George Phillips • Holly Pickerel • Jabin Khan • James Black • James Reily and Patricia Reily • Jamie Carr • Jane Stro • Jessica Bombar • Jesus Macarty • Jill MacDonald • JL Umphres • Joe Bettinger • Joseph Courtney • Josephine Fernando • Julie Cabou • Kathryn Brinton • Kristi Becker • Lily Dyu • Lindsay Bazett • Liz Shear • Loc Dorothy Epsten • Margo Parmacek • Marie Miller • Marilee McLean • Marirose Charbonneau • Mark Bryce • Mark Geyer • Mark Schulman • Martha Haight • Mary Place • Mimi Monaco • Nancy VanVeen • Nicholas Wolken • Nicole Arbusto • Norman Mauz • Patricia Hughes • Paul Pockros • Peter Mavromates • Peter Sprague • Pierce Flynn • Rachel Moayed • Raja Iglewicz • Randy Phillips • Rebecca Early • Ricardo Nichol • Richard Alper • Richard Hendlin • Rita Macdonald • Robert Alpern • Ronald Frank • Sandy Gereaux • Sarah Henriksen • Scott and Marcy Jordan • Shuichi Ito • Simone MacLellan • Simone Schad • Susan Shane • Taylor Burks • Terrence Wardell • Tim Towles • Tyrone Vonberg

PARTNERS

We are deeply grateful to our partners. Each of you have generously assisted SLF direct programs and fiscal sponsorees in meeting their mission in communities. Together we make up a strong contingent of organizations working on behalf of the common good.

American Indian Movement • Belly Up • Cape Downwinders • Diabetes Research Connection • Dr. Bronner's • Easter Seals SoCal • Environmental and Energy Study Institute • The Farmacy Initiative • Hanford Challenge • Illumina • Intellectual Capital • J. Craig Venter Institute • Kids Eco Club • Leah's Pantry • Master Gardeners of San Diego County • Mothers for Peace • Oceanside High School • Plume Labs • Primo Energy • Sage Garden Project • Salk Institute for Biological Studies • San Clemente Green • San Onofre Safety • San Diego Unified School District • Scrojo • SDUSD Food & Nutrition Services - Slow Food Urban San Diego • Strategic Energy Innovations • University of California San Diego • University of Maryland • USS Midway Museum • Yale University

SLF Provides Value to our Community by:

moving fast to respond to pressing issues
amplifying and elevating community voices first
developing programs with precision to best meet needs
investing in the one unique gap that makes programs and research operational
researching, connecting to experts, and sorting information to find leverage points
consolidating the big picture and translating technical information into accessible materials

DONATE
Support our work with a
gift to future generations



EMAIL

info@samuellawrencefoundation.org



SOCIAL MEDIA

@samuellawrencefoundation